

ANNUAL SCHOOL REPORT CARD

BRONAUGH R-7 SCHOOL DISTRICT

A MESSAGE FROM THE SUPERINTENDENT



The mission of the Bronaugh Public Schools is to provide opportunities for our students by ensuring a quality education. The teachers, staff and administration are dedicated to ensuring that all students are well prepared to be successful citizens of our country. As educators we continually strive to make Bronaugh Schools the best educational system possible. This is the noble mission that our school board and community supports, and we are proud to embrace it. Designed to be helpful to our patrons, the following annual school report card shows many statistical aspects of our school system. I invite you to drop by our school for a visit. I know you will sense the warm and caring environment our staff brings to each classroom.

This report includes important information about Bronaugh R-7 Schools: Bronaugh High School and Bronaugh Elementary School.

Unless otherwise noted, the latest statistics provided here are for the 2005-2006 academic year.

This report meets the requirements of state law (Section 160.522, RsMO) and the federal law (No Child Left Behind).

For more information, contact Bronaugh Schools @ 417-922-3211.

Comparisons of all local data to state averages are located at: www.dese.mo.gov/planning/profile/108143.html

Thank you for your support!—*Ms. Patricia Phillips, Superintendent*

Board of Education

July 2005-April 2006

John Houk, Jr., President
 Tonya Cliffman, Vice President
 Kristi Hinkle, Secretary
 Tom Riley, Treasurer
 Chris Arens, Member
 Andy Brannan, Member
 Warren Langford, Member

April 2006-June 2006

John Houk, Jr., President
 Tonya Cliffman, Vice President
 David Shaw, Treasurer
 Chris Arens, Member
 Andy Brannan, Member
 Warren Langford, Member
 Rick Piper, Member

The Board meets the second Thursday of each month at 7:00p.m. , unless otherwise posted.

Inside this Report:

Vital District Statistics	2
Teacher Qualifications	2
District Programs	3
K-6 & 7-12 Statistics	4
Mission & Vision	5
Curricular Offerings	6
Missouri Statistics	7
Extra Curricular Act.	8

ANNUAL SCHOOL REPORT CARD

Page 2

VITAL STATISTICS ABOUT OUR DISTRICT



Accreditation Status	Accredited
Pre-school Enrollment	14
Total Enrollment: K-12	240
Voter– approved tax rate (maximum)	\$3.57
Actual Tax Rate (adjusted)	\$3.57
Total Assessed Valuation	\$10,752,378
Average Annual Cost per Pupil in Average Daily Attendance	\$7559.93

SOURCES OF FUNDS

Percent of District Budget from Local Sources	39.38%
Percent of District Budget from State Sources	48.60%
Percent of District Budget from Federal Sources	12.02%

SALARY DATA

Average Salary of All Administrators	\$54,438
State Average	\$75,236
Average Base Teacher Salary	\$27,342
State Average	\$40,397
Average Total Teacher Salary (Includes Career Ladder, extra duties, etc.)	\$30,732
State Average	\$42,077
Average Salary of Support Staff	\$14,565
State Average—not available	

TEACHER QUALIFICATIONS



Average Years of Experience (All Professional Staff)	13.2
Percent of Faculty with Master's Degree or Above	44.70%
State Average	50.00%
Percent of All District Teachers with Regular* Certification	100%
Percent of All District Teachers with Temporary Certification	0.0%
Percent of all District Teachers with Substitute/no certification	0.0%
Percent of Classes Taught by Highly Qualified Teachers	97.5%

**Missouri Life Certificate, PCI, PCII, Continuous Professional Certificate (CPC) or Provisional Certificate, as defined by the State of Missouri.*

STAFFING RATIOS

Students to Administrators	124:1
Students to Classroom Teachers	13:1

COMPETITIVE GRANT PROGRAMS

Vocational Professional Development Grant, Ozark Rural Systemic Initiative Grant

ENTITLEMENT GRANTS

Title I, Title IIA, Title IID, Title IV, Title V, SRSA Grant

SAFETY & DISCIPLINE

Incident Rate (per 100 students)	0
State Average	2.1
Number of Students Expelled	0
Number of Students Suspended (ISS)	0
Number of Students Suspended (OSS)	1

Numbers reflect safe school violations or suspensions over 10 days

PARENT TEACHER CONFERENCE PARTICIPATION 2003

Grades pre-K-6: 95.8% Grades 7-12: 81.0%

DISTRICT PROGRAMS & SERVICES

Percent of Students Eligible for Free & Reduced Lunch Program	52.2%
Number of Children Served in Title I Pre-school	14
Number of Children Served in Early Childhood Special Education	0
Percent of All Students, K-12, Served in Special Education Programs	14.4%
Number of Families Served by PAT Program	61
Percent of Students Served in Gifted Program	<1%
Percent of Students in Vocational Programs	35.9%
Percent of Credits Earned in Advanced Courses	45.5%
Percent of Graduates Entering College	73.3%
Percent of Vocational Completers Who Are Placed	100%

MSIP WAIVER

Bronaugh R-7 School District received a 3rd cycle waiver for the Missouri School Improvement Plan

Adequate Yearly Progress

Bronaugh R-7 School District Met the criteria in both Communication Arts and Mathematics for No Child Left Behind

Annual Performance Report

Bronaugh R-7 School District met the targets on 14 out of 14 performance indicators

CALENDAR

Days Scheduled for Student Attendance	175
Hours Scheduled for Student Attendance	1096.5
Days for Parent Teacher Conferences	2
Days for Staff Development	6 full days, 6 partial days

Title I

This federally funded program begins with preschool program and continues through 6th grade. Title I services for 2005-2006 were provided through a Schoolwide Program. Schoolwide Title I goals include increasing achievement in both Reading and Math in grades preK-6.

BRONAUGH ELEMENTARY SCHOOL PRE-K—6

ENROLLMENT (K-6) 115	ADVANCED DEGREES EARNED 44.6%	ELIGIBLE FOR FREE & REDUCED LUNCHES 67 OR 58%
ENROLLMENT (Pre-K) 14	AVERAGE REGULAR TERM TEACHER SALARIES \$27,342	TEACHER CERTIFICATION 100% WITH REGULAR CERTIFICATES, 0% WITH SUBSTITUTE CERTIFICATES AND 97.5% HIGH QUALITY TEACHERS.
AVERAGE DAILY ATTENDANCE 95.5%	AVERAGE TOTAL TEACHER SALARIES \$30,732	
STUDENT/TEACHER RATIO 13:1	AVERAGE ADMINISTRATOR SALARY \$50,020	
STUDENT/ADMINISTRATOR RATIO 122:1	AVERAGE PER PUPIL EXPENDITURE \$7,559.93	
AVERAGE YEARS OF EXPERIENCE OF PROFESSIONAL STAFF 13.2 YRS.	NUMBER OF STUDENTS	

STUDENTS CONTINUING IN EDUCATION

Entering a 4 yr. college/university 18.2%

Entering a 2 yr. college/university 31.8%

Entering a Post-secondary (non-college) Institution 0%

BRONAUGH SECONDARY SCHOOL 7-12

ENROLLMENT (7-12) 96	YRS.	NUMBER OF STUDENTS ELIGIBLE FOR FREE/REDUCED LUNCHES 42 or 40%
AVERAGE DAILY ATTENDANCE 94.1%	ADVANCED DEGREES EARNED 44.7%	TEACHER CERTIFICATION 100% WITH REGULAR CERTIFICATES, 0% WITH Substitute MISSOURI CERTIFICATE and 97.2% HIGH QUALITY TEACHERS
STUDENT DROPOUT RATE 0%	AVERAGE REGULAR TERM TEACHER SALARIES \$27,342	TOTAL DISCIPLINARY ACTIONS 0, INCIDENT RATE 0.
STUDENT/TEACHER RATIO 13:1	AVERAGE TOTAL TEACHER SALARIES \$30,732	
STUDENT/ADMINISTRATOR RATIO 122:1	AVERAGE ADMINISTRATOR SALARY \$50,020	
AVERAGE YEARS OF EXPERIENCE OF PROFESSIONAL STAFF 13.2	AVERAGE PER PUPIL EXPENDITURE \$7559.93	

ACT TEST

% OF STUDENT SCORING AT OR ABOVE THE NATIONAL AVERAGE

2002 33.3%

2003 18.2%

2004 21.1%

2005 33.3%

2006 29.4%

Comparison test data for MAP is available on the Department of Elementary and Secondary Schools Website at the following address:

www.dese.mo.gov/planning/profile/108143.html



MISSION STATEMENT: *Creating Opportunities through quality education*

EDUCATIONAL PHILOSOPHY: *We believe that the educational process should develop a feeling of self worth and accomplishment within each student and should be built upon a thorough understanding of the basic skills. Furthermore, we believe that the self actualization of each child should be in harmony with appreciation for the importance of our democratic way of life shall not be inherited, but must always be learned and earned anew by each generation in order for it to be perpetuated. Therefore, we believe the role of education to be one of helping individuals achieve their greatest potential, which will, in turn, enable them to make their greatest contribution to society. It is, therefore, the responsibility of the Bronaugh R-VII Schools to provide an environment for children of the District, which will foster and accelerate their intellectual, social, physical, aesthetic, emotional, and ethical development.*

VISION STATEMENT: *In order to carry out the mission of Bronaugh R-VII School District, the stakeholders (students, parents, educators, and patrons) have identified the following key components necessary for the lifelong success of all students: Learning, Commitment, Accountability, and Teamwork. All stakeholders will continually strive to achieve these goals and all decisions made in the school will be driven by the vision.*

LEARNING

- Develop and sustain high expectations
- Promote life-long learning through a viable education
- Achieve higher student performance
- Supply a safe, positive, stimulating environment for learning

COMMITMENT

- Protect instructional time
- Teach the viable and aligned curriculum
- Support teachers through high quality professional development
- Use all available resources to maximize student learning
- Set exemplary standards through research and data driven decisions.

ACCOUNTABILITY

- All stakeholders share the responsibility for student success
- Model good citizenship, build self-esteem, and develop character
- Monitor performance and provide feedback

TEAMWORK

- Respect individual differences
- Maintain effective communication
- Establish and maintain unity among all stakeholders
- Encourage and foster a collaborative atmosphere for stakeholders

CURRICULAR OFFERINGS

Language Arts

Language Arts I-r, Language Arts II-r, Language Arts III, Language Arts IV, World Literature, Contemporary Literature, Speech-1/2—dc.

Social Science

American History-r, American Government-r, World History—dc, World Geography, Psychology-1/2-dc, Sociology-1/2-dc, Economics-1/2, History of the West-1/2, Civil War-1/2.

Mathematics

Algebra I, Algebra II, Geometry, Advanced Math/Math Analysis.

Science

Physical Science, Biology I, Chemistry, Biology II, Physics.

Practical Arts-Agriculture

Agriculture I, Agriculture II, Greenhouse Management, Ag. Construction, Animal Science-1/2, Crop Management-1/2, Conservation-1/2, Landscaping-1/2, Ag. Marketing-1/2.

Practical Arts-Business

General Business, Keyboarding I, Keyboarding II, Computer Application, Business Law, Media Technology and Personal Finance.

Practical Arts--Family & Consumer Sciences

FACS I, Consumer Science, Nutrition & Wellness-1/2, Advanced Foods-1/2, Independent Living-1/2, Parenting-1/2, Child Development-1/2, Entrepreneurship 1/2.

Practical Arts-Industrial Arts

Woods I & Woods II

Fine Arts

Art I, Art II, Art III, Art IV, Band I, Band II, Band III, Band IV, Choir I, Choir II, Choir III, Choir IV, Drama-1/2.

Physical Education

Freshman PE-1/2-r, PE II, PE III, PE IV, Health-1/2-r.

Electives

Spanish I-dc, Spanish II-dc.

Vocational Courses offered from Nevada Regional Technical School

All courses are 1 credit unless specified, dc=dual credit, r=required.

DOCUMENTS

The following documents were revised, updated, or established during the 2005-2006 school year. Copies of all documents are available on our website at www.bronaughschools.net or from our office in paper format.

Comprehensive School Improvement Plan 2006-2011, Schoolwide Title I Plan 2006-2007, Technology Plan 2006-2009, Professional Development Handbook, Performance Based Evaluation Handbook, Job Descriptions, School Board Policies and Regulations, Staff/Teachers/Principal's Handbook

STATISTICS ABOUT MISSOURI PUBLIC SCHOOLS

- Public School Enrollment, K-12—891,847
- Pre-K enrollment in public run pre-schools—13,618
- Average Daily Attendance, K-12, 94%
- Number of Public School Districts—524
- Current Accreditation (MSIP) Status of School Districts: Accredited 511, Provisionally Accredited 12, Unaccredited 1
- Graduation Rate 85.7%
- State Average Dropout Rate (9-12) 3.8%
- Number of High School Graduates 57,495
- Percentage of High School Graduates entering College 64.1%
- Percentage of High School Graduates entering Technical School 4.3%
- Percentage of students in Special Educations 14.8%
- Percentage of students eligible for free and reduced lunch program 41.8%
- Schools meeting AYP 65.2%
- Classes taught by highly qualified teachers 97.2%
- Student/Classroom Teacher Ratio 18:1
- Student/Administrator Ratio 203:1
- Missouri Average Total Teacher Salary \$40,676
- Average Years of Teaching Experience 12.6
- Percentage of Teachers with Master's Degrees and Above 50%
- Current Expenditures per Pupil (in Average Daily Attendance) Missouri Average \$7679
- Sources of Current Revenue for Schools: Local/County Funds—55.7%, State Funds—34.8%, Federal Funds-9.5%
- Average School Tax Levy Total: Operating Funds: \$3.41, Debt Service Fund: \$0.39



State Board Of Education

President— Peter F. Herschend Branson

Vice President- Deborah Demier, Wentzville

Vanetta E. Rogers St. Louis

Sybol Slaughter Lebanon

Russell V. Thompson Columbia

Shirely Hindman, Harveill

David Liediti, St. Joseph

Thomas, R. Davis, Kansas City

COLLEGE ENTRANCE EXAM SCORES—ACT

Year	Missouri	National
2001-02	21.5	20.8
2002-03	21.4	20.6
2003-04	21.5	20.9
2004-05	21.6	20.9



***Missouri Department of Elementary & Secondary Education
PO Box 480
Jefferson City, Missouri 65102-0480***

D. Kent King, Commissioner of Education

BRONAUGH R-7 SCHOOL DISTRICT

Creating opportunities through quality education.

527 East 6th Street
Bronaugh, MO 64728

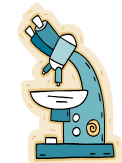
Phone: 417-922-3211
Fax: 417-922-3308

Postal Patron



HOME OF THE WILDCATS

EXTRA/CO—CURRICULAR ACTIVITIES



Activity	Revenue	Expenditure <i>(does not include Transportation expenses)</i>
Athletics	3673.89	7419.38
FCCLA	4745.68	4662.74
FFA	12717.80	11445.79
Cheerleaders	1816.15	333.05
Music	5295.37	4263.81
National Honor Society	666.56	798.27
Science Club	2101.65	1892.60
Student Council	3680.68	3647.44
Yearbook	7585.41	7844.41
Girls' Athletics, extras	1726.30	243.80
Activities listed in red—expenditures exceeded revenues for the fiscal year		

